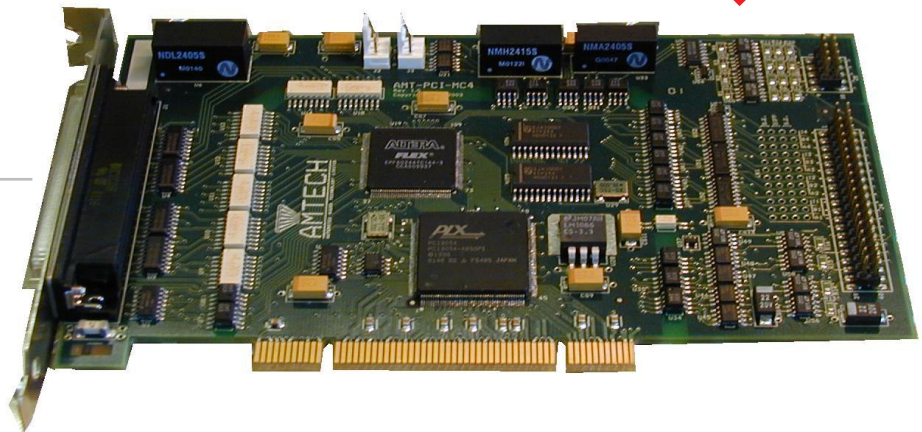


PCI MOTION CONTROL CARD (AMT-PCI-MC4)

NEW



KEY FEATURES

- 4 axis of Servo Control
- 4 axis of Stepper Control
- Smooth continues path motion
- Circular Interpolation
- Linear Interpolation upto 10 axes
- Helical Interpolation
- 16 Optically Isolated Digital Inputs
- Up to 16 Optically Isolated Digital Outputs *
- Comprehensive software support
- Windows compatible DLL & driver
- PCI Plug and Play configuration
- 4 optically isolated Differential bit AB encoder input channels
- 4 isolated 16 bit analogue output channels
- Each encoder channel contains a 15bit up/down counter
- 4 isolated 12 bit analogue input channel

* 16 Outputs when none of the Stepper channel are being used.

This board is a PC compatible multi axis servo and stepper motion control card, giving a high level of protection against noise. Ideal for industrial applications, with a comprehensive range of software support and a excellent price performance.

This card can be used in a variety of applications from a simple single axis indexing tool, to a multi axis profile cutting machine. Several cards can be used in the same PC.

The product has been both designed and manufactured in the UK.

Applications

- Motion control and positioning
- System automation
- Process Control
- Robotics
- Automatic welding machine
- Profile cutting machines
- Woodwork routing machines
- Engraving machines
- Drilling machines
- Laser cutting machines
- Water jet cutting machines
- Glue laying machines
- Automatic stitching machines
- Tangential knife
- Glass cutting machines
- Lathes & Mills

Options

AMT-PCI-MC4S

- Upto 8 axes Stepper Control*
- 16 digital inputs
- Upto 16 digital outputs*

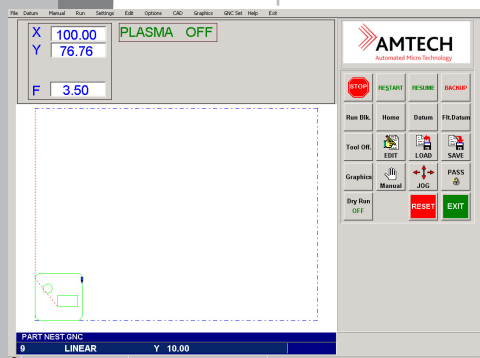
AMT-PCI-MC4

- 4 axes Servo Control
- Upto 8 axes Stepper Control*
- 16 digital inputs
- Upto 16 digital outputs*

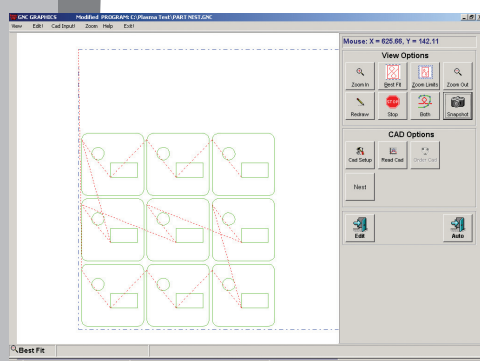
4A/I

- 4 analogue inputs option

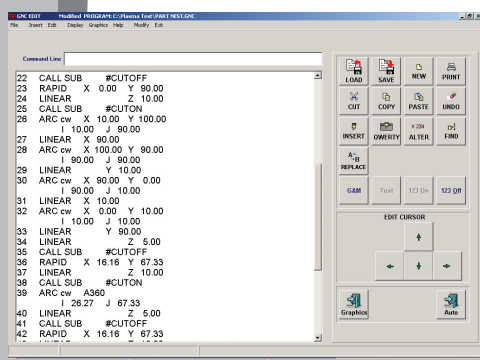
* Each stepper axis used takes 2 digital outputs



GNC Execution Screen



GNC Graphics Screen



GNC Edit Screen

TECHNICAL SPECIFICATION

Analogue Output Specification

4 x 16 bit DACs, with a 10 volts reference. At power on DAC outputs will be at 0v. All DAC outputs can be updated simultaneously under software control. Each DAC output capable of supplying +/-20mA.

Encoder Input

4 x Encoder input channels, each consisting of A, B and Index signals. Maximum input frequency 250khz (4,000,000 quadrature counts per second). Internal 15 bit up/down counters used to maintain position registers. Digital input filter to remove noise spikes.

Analogue Input

Up to 4 optional 12 bit ADC input channel.

Watch Dog Timer

Capable of resetting the on board logic to a safe power up state on a PC processor lock up.

CAN interface

Two independent CAN channels, capable of use at 125K, 250K or 500K

General

32 Bits PCI interface

Isolation

+/-2500Volts

Operating temperature

0 to +70 degrees C

Board size

190 mm long x 115 mm tall

Servo Connector

37 way 'D' type male

Stepper and digital I/O

37 way 'D' type female