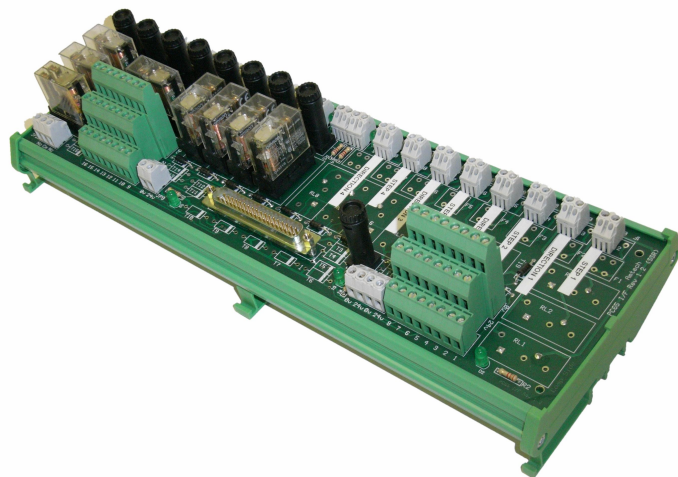
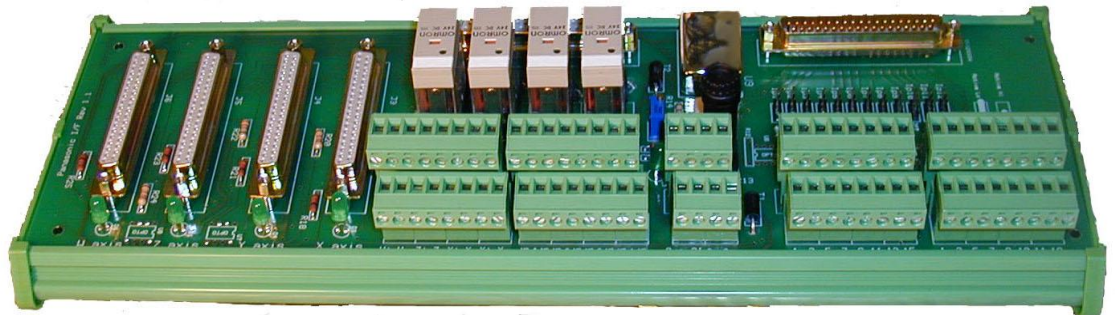


RELAY INTERFACE BOARD / STEPPER RELAY INTERFACE BOARD



KEY FEATURES

RIB Features

- Din Rail Mountable
- Interface through 37 way connector to PCI Control card (sold separately)
- Optional transils to guard against HFI
- 16 Digital Inputs
- 16 Digital Outputs

Stepper RIB Features

- Din Rail Mountable
- Up to four stepper axis (First 8 outputs used)
- Interface through 37 way connector to PCI Control card (sold separately)
- Optional transils to guard against HFI
- 16 Digital Inputs
- 16 Digital Outputs*

*16 Outputs when none of the Stepper channels are being used.

Amtech's Relay Interface Board is a simple and cost effective way to interface the AMT-PCI-MC4 card to system wiring and control equipment.

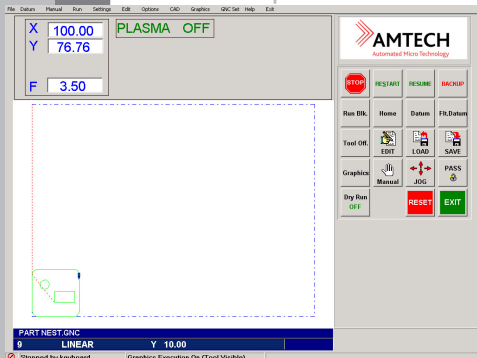
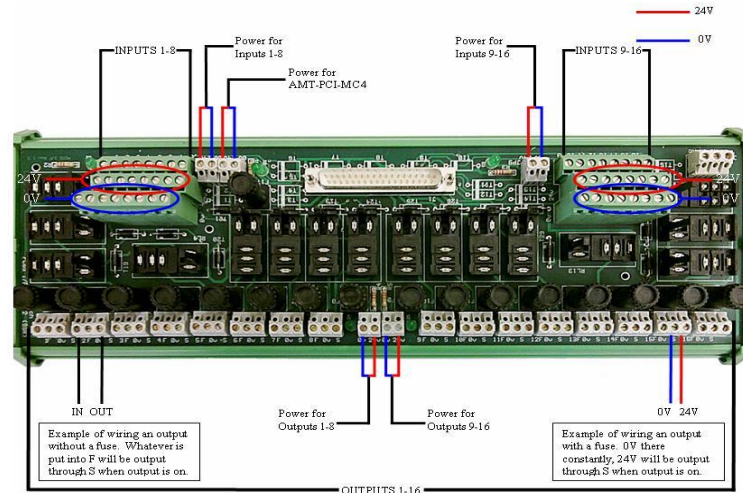
Amtech's Stepper Relay Interface Board is a simple and cost effective way to interface the AMT-PCI-MC4S card to system wiring and control equipment.

The product has been both designed and manufactured in the UK.

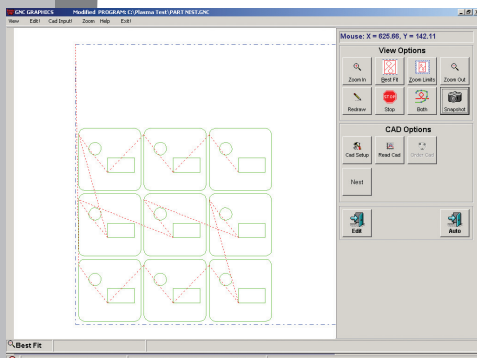
Applications

Any application requiring digital input and output in an electrically noisy environment

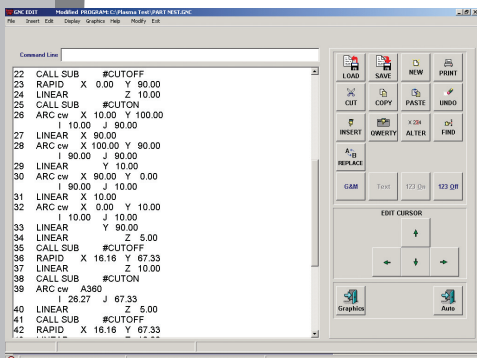
Wiring Diagram



GNC Execution Screen



GNC Graphics Screen



GNC Edit Screen

TECHNICAL SPECIFICATION

Outputs

15 Omron SPCO 10 Amp Relay bases / 7 on Stepper RIB

1 Omron DPCO 5 Amp Relay base

Relay contacts wired through 20mm Fuseholder to screw terminals

Power

Power input via screw terminal connector, 12v or 24 volt DC, Input and output sections can be powered separately

Inputs

16 x 3 tier terminal inputs, suitable for wiring direct to NPN type detectors

Dimensions

341mm x 126mm