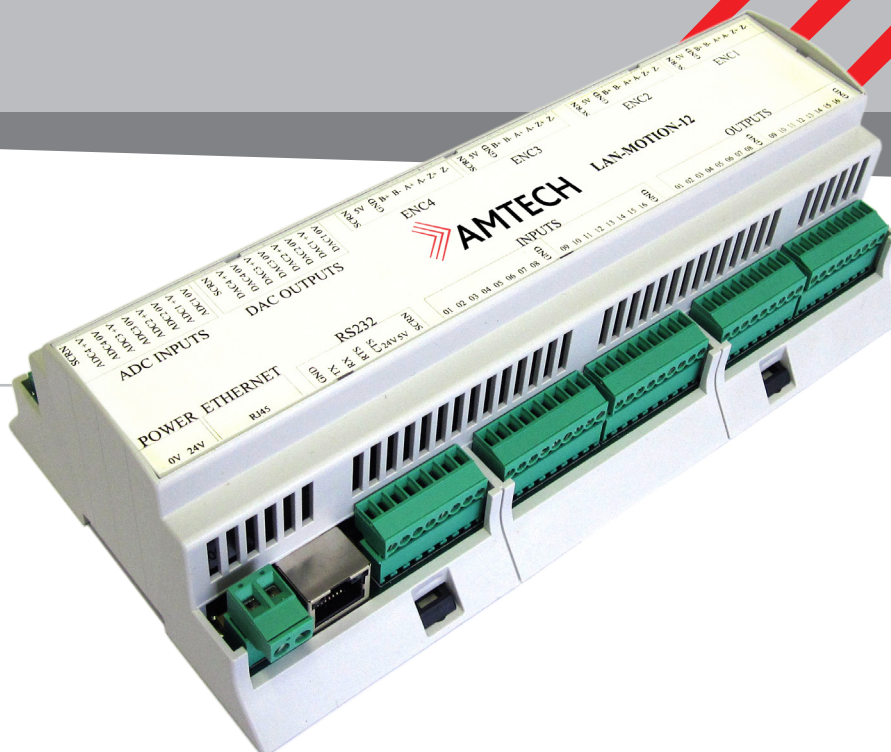


LAN-MOTION CONTROLLER

8 – 12 AXES

NEW



KEY FEATURES

- 4 axes of Servo Control
- 8 axes of Stepper Control
- Profile path look ahead
- Smooth continues path motion
- Circular Interpolation
- Linear Interpolation on all 12 axes
- Helical Interpolation
- Axes gearing
- 16 Optically Isolated Digital Inputs
- Up to 16 Optically Isolated Digital Outputs *
- Comprehensive software support
- Windows compatible DLL
- 4 optically isolated Differential AB and Z encoder input channels
- Each encoder channel contains a 15bit up/down counter
- 4 isolated 16 bit analogue output channels
- 4 isolated 12 bit analogue input channel

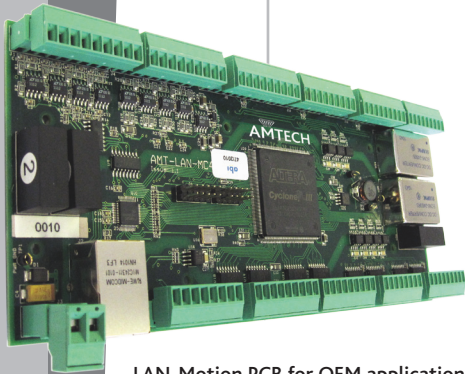
*16 Outputs when none of the Stepper channels are being used.

An out of the box motion control solution

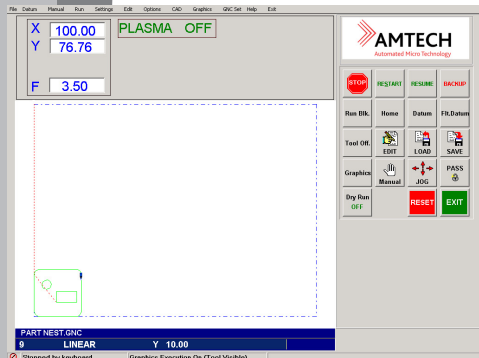
- LAN-Motion comes with FREE GNC Lite for Windows software. GNC is a proven motion control solution, which is used in hundreds of applications
- Fast 32-bit RISC processor with floating point co-processor
- High Speed Ethernet 10/100 Mbps. communication
- No expensive interface boards or cables required
- Standalone or PC/HMI linked operation
- Compact DIN rail mounting

LAN-Motion is an Ethernet based multi axes servo and stepper motion controller. It based on a fast 32-bit RISC processor and floating point co-processor with optical isolation providing a high level of protection against noise. Together with the GNC for Windows software and excellent price performance its offers a flexible and affordable solution for use in a wide variety of industrial applications.

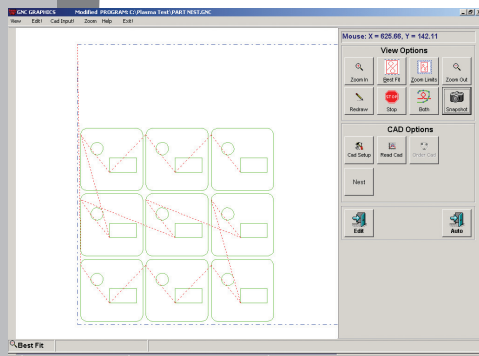
The product has been both designed and manufactured in the UK.



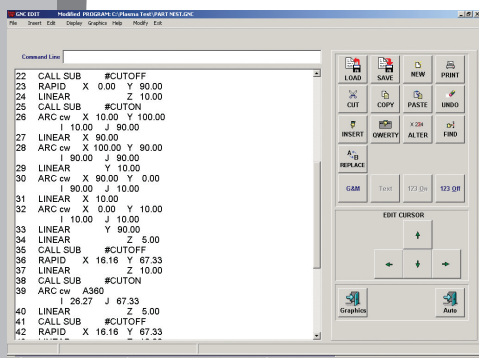
LAN-Motion PCB for OEM applications



GNC Execution Screen



GNC Graphics Screen



GNC Edit Screen

Applications

- Motion control and positioning
- System automation
- Process Control
- Robotics
- Automatic welding machine
- Profile cutting machines
- Woodwork routing machines
- Engraving machines
- Drilling machines
- Laser cutting machines
- Water jet cutting machines
- Glue laying machines
- Automatic stitching machines
- Tangential knife
- Glass cutting machines
- Lathes & Mills

Options

LAN-MOTION-8

- Upto 8 axes Stepper Control*
- 16 digital inputs
- Upto 16 digital outputs*

LAN-MOTION-12

- 4 axes Servo Control
- Upto 8 axes Stepper Control*
- 16 digital inputs
- Upto 16 digital outputs*

4A/I

- 4 analogue inputs option

* Each stepper axis used takes 2 digital outputs

TECHNICAL SPECIFICATION

Analogue output specification

Four 16 bit DACs, with a +/- 10 volts signal. At power on DAC outputs will be at 0v. All DAC outputs can be updated simultaneously under software control.

Encoder input

Four optically isolated input channels, each supporting 5 volt differential inputs for the A, B and Index signals.

Maximum input frequency on each of the A, B and index signals 4MHz (16,000,000 counts per second).

Internal 15 bit up/down counters used to maintain position registers.

Digital input filter to remove noise spikes.

Analogue input

Up to 4 optional 12 bit ADC input channel.

UART

A four wire optically isolates RS-232 interface. Operating up to 230 K baud.

General

Operating temperature 0 to +70 degrees C

PCB Board size
210 mm long x 88 mm wide
25mm tall

Din Rail Enclosure size
212 mm long x 90 mm wide
62mm tall